





COMPANY PROFILE

Vitrum Design specializes in Smart Home and Building Automation solutions: switches, thermostats, and devices compatible with the KNX standard and the AIR protocol, aimed at revolutionizing the concept of living.

Our solutions stand out for their inimitable aesthetics and high-quality materials. Classic and contemporary tastes merge to create devices that embody true Made in Italy design. With a clear focus on sustainability, Vitrum Design's intelligent systems enable optimal energy management, improving load monitoring and reducing consumption.

Our switches provide precise management of the entire building while offering exceptional independence for each space. Designed to be intuitive and user-friendly, they deliver unmatched ease of use. Vitrum Design seamlessly blends technology and style, creating a living experience where comfort, elegance, and innovation transform everyday life.

INDEX

SMART LIVING	8
COLLECTIONS	16
BESPOKE	46
TECHNOLOGY	48
KNX	52
AIR	56
TECHNICAL SPECIFICATIONS	60
ACCESSORIES	66

SMART LIVING



**THE QUALITY OF MATERIALS, THE FLUIDITY
OF FORMS**

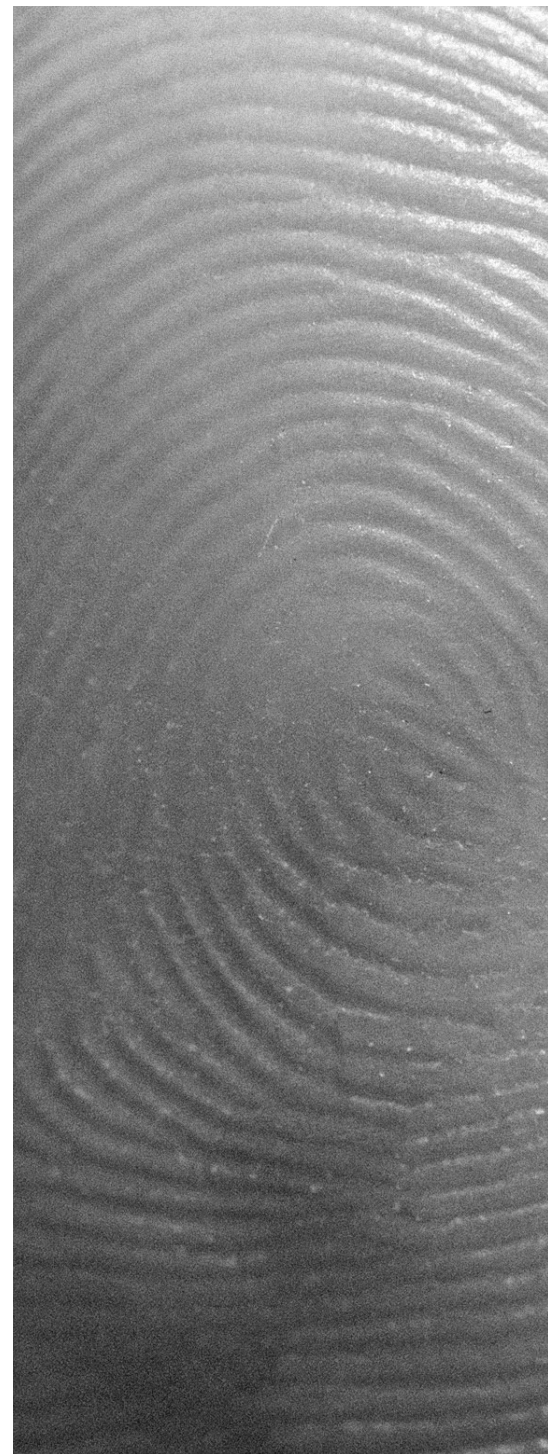
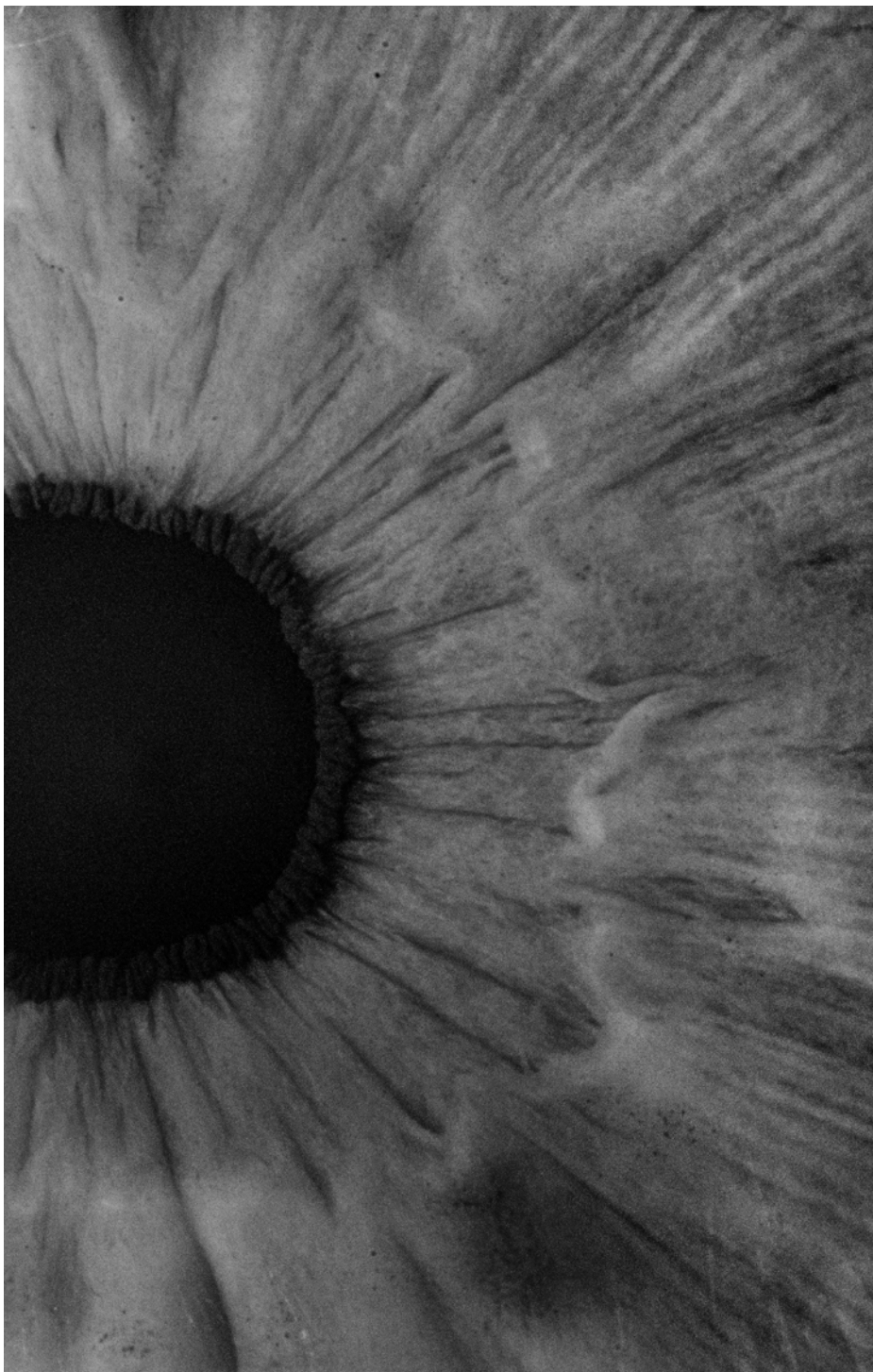
Glass, KRION®, stone, and marble: discover the range of premium materials, finely crafted to enhance their natural beauty.

HARMONY FOR YOUR INTERIORS

Vitrum Design products are inspired by balance: the seamless continuity between the button and the surface creates an unparalleled visual and tactile experience.

FREEDOM OF CHOICE

Discover our wide range of customization options—colors, materials, icons, finishes, and more—giving you complete control over your spaces.



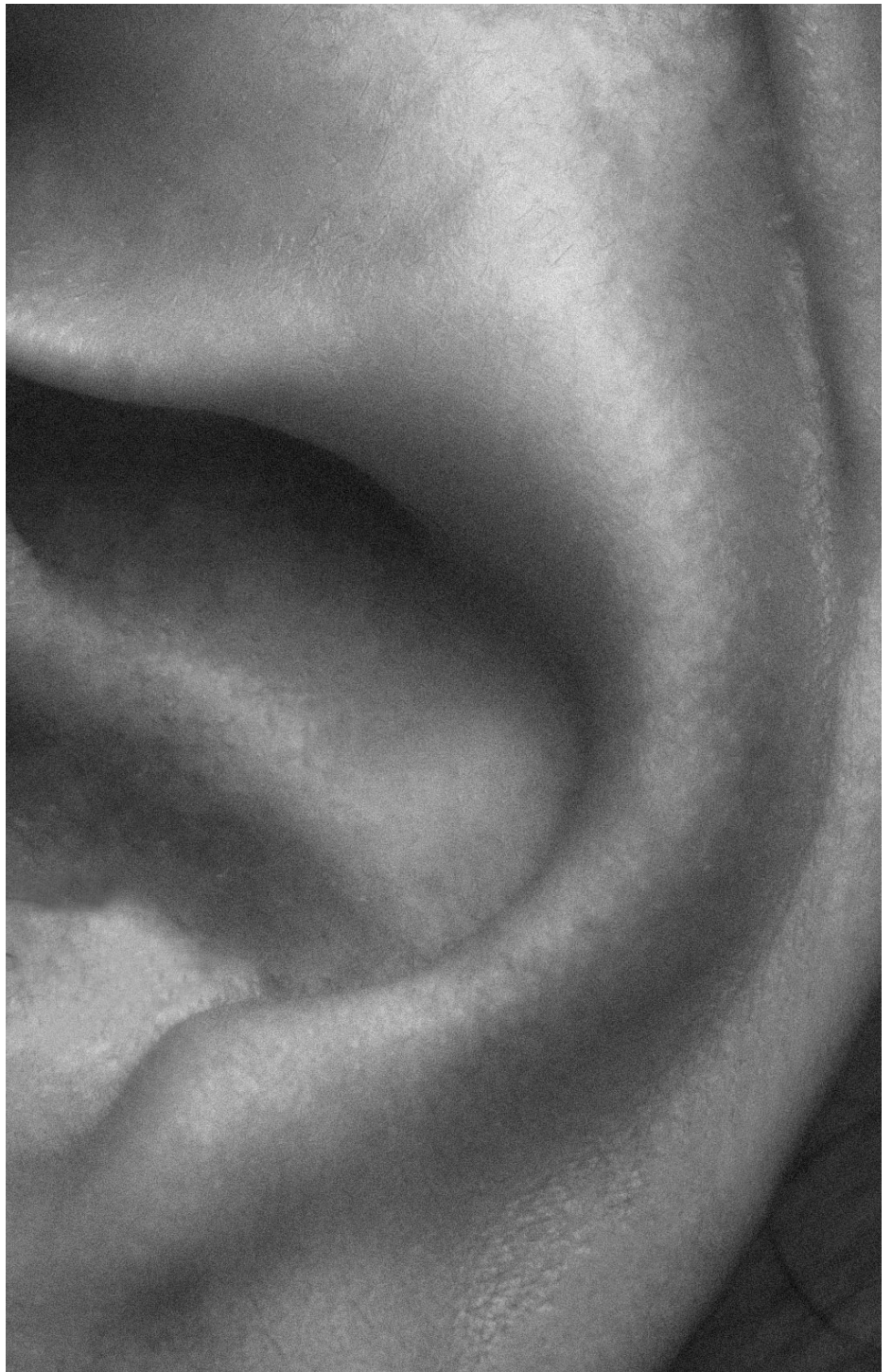
FEELING VITRUM

VIEW

The luminous circle, a distinctive symbol of Vitrum Design, is the perfect synthesis of simplicity and lightness. The RGB LEDs, configurable in both color and intensity, adapt to any need. The backlit icons enhance the user experience, making a simple gesture like turning the lights on and off intuitive and effortless.

TOUCH

Vitrum Design switches provide advanced haptic feedback, adding a tactile dimension to the user-device interaction. Through a gentle vibration, each action is confirmed intuitively and precisely.



HEARING

The pressure of the button also engages the sense of hearing: an acoustic feedback immediately confirms the activation of the control, enriching the sensory experience of Vitrum Design.



COLOR TOUCH

The integrated RGB LED system offers complete configuration of color and brightness for each individual button on the device, ensuring a clear and intuitive visual interaction.

Choose from 7 preset tones to customize the interface: cyan, white, blue, red, green, yellow, and magenta.



ECOMODE

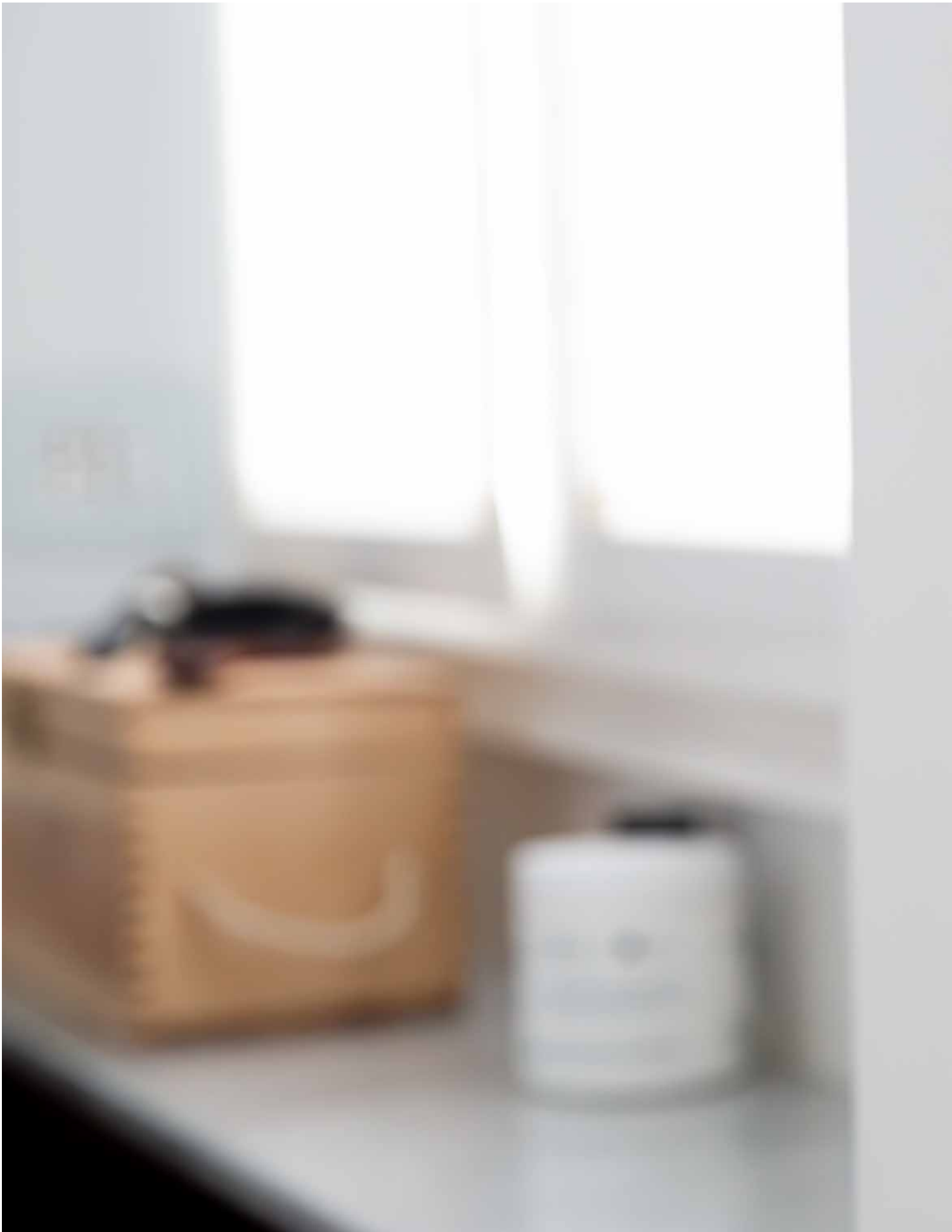
Available on all Vitrum Design switches, the Proximity sensor can be activated from the dashboard (CLOUD system) or ETS (KNX system). It allows the RGB LED to turn off when the device enters standby mode (after approximately 8 seconds of inactivity) and to turn on when a hand approaches the device or upon pressing the button.

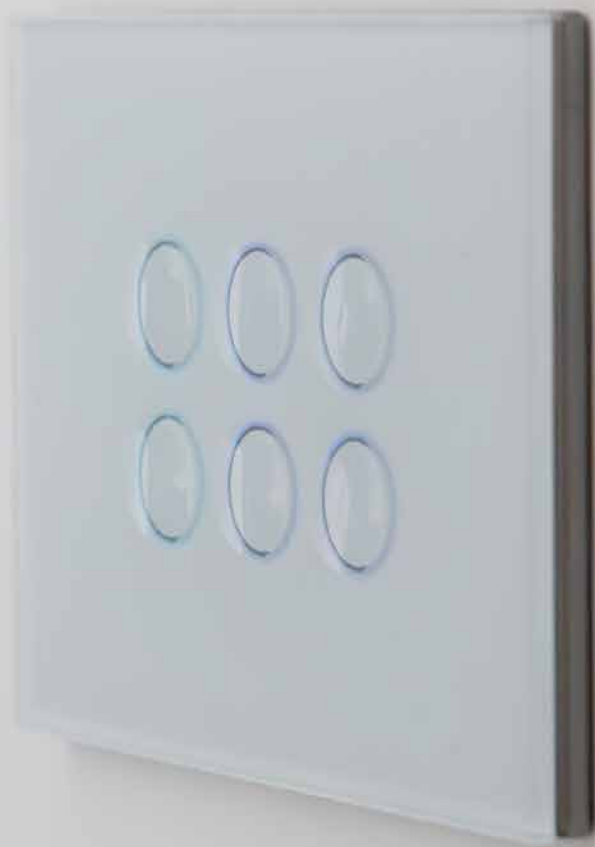


ICONOGRAPHY

Each button can be customized with icons from our catalog, offering a wide selection of options for various functions. These icons are engraved with a fine laser line on the surface of the device and backlit by RGB LEDs.



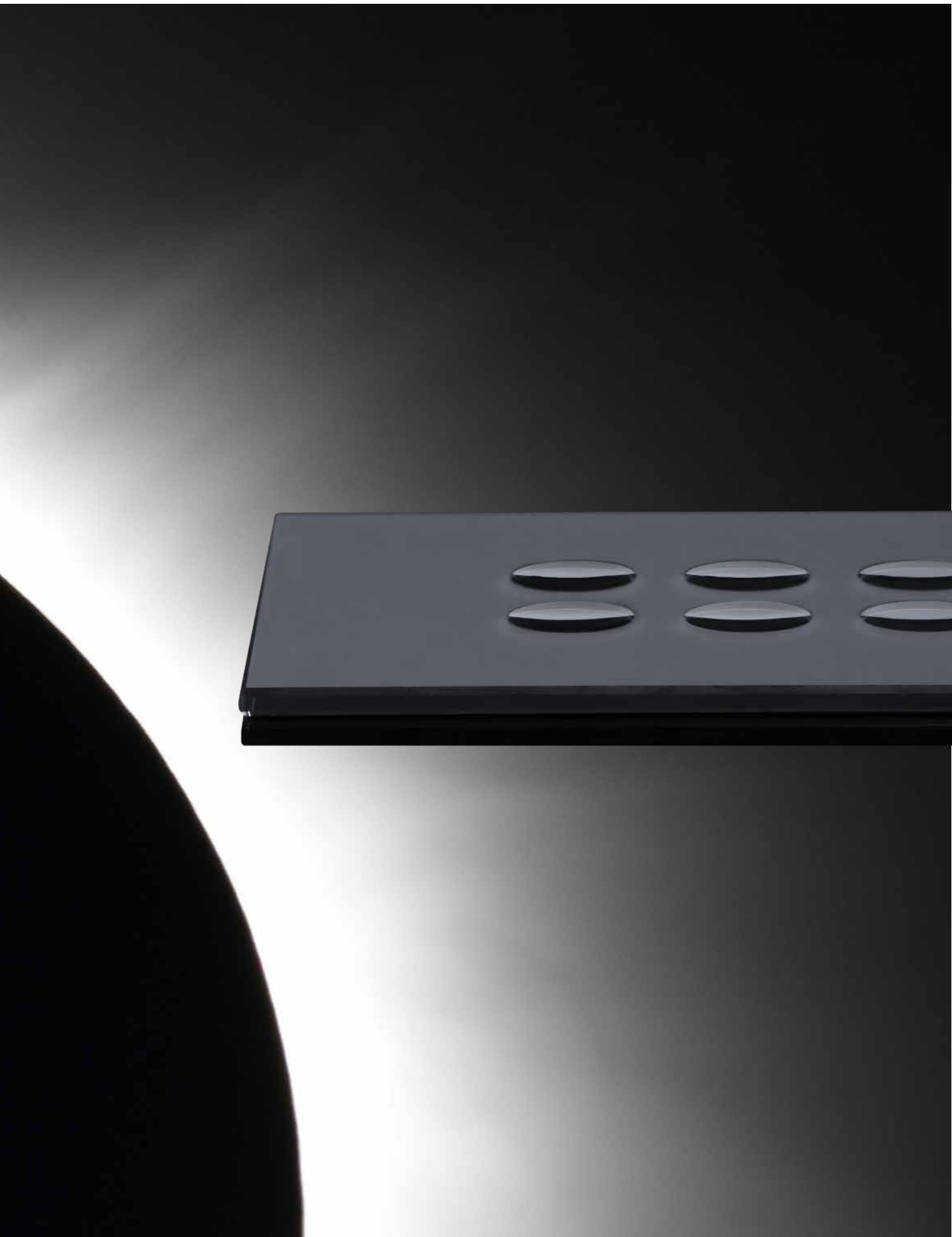




COLLECTIONS

The harmony of purity

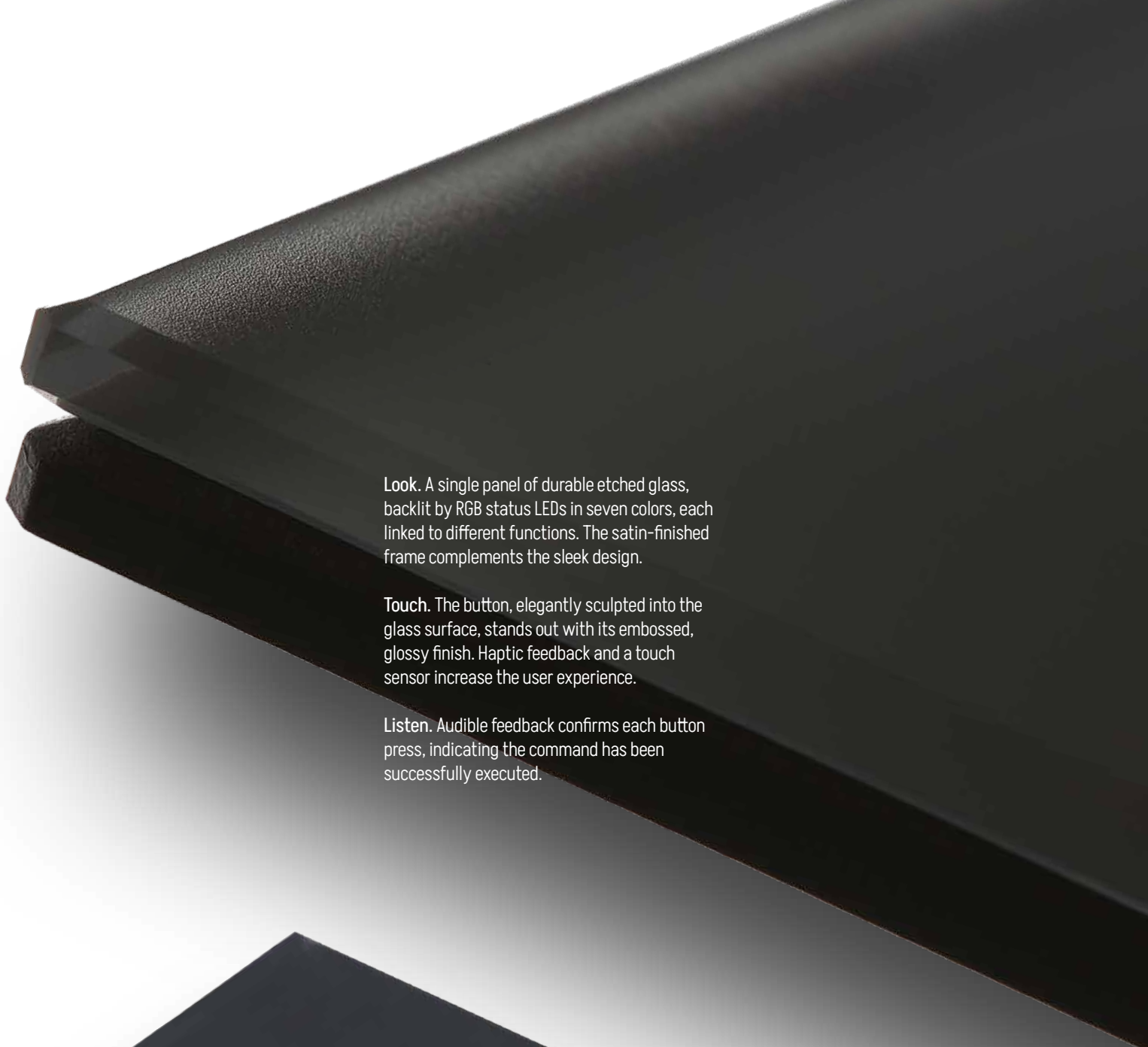
GLASS



GLASS




Glass is where the Vitrum Design touch series finds its purest expression. The brightness, balance, and sleek lines elevate the GLASS switches into design objects with a distinct character.



Look. A single panel of durable etched glass, backlit by RGB status LEDs in seven colors, each linked to different functions. The satin-finished frame complements the sleek design.

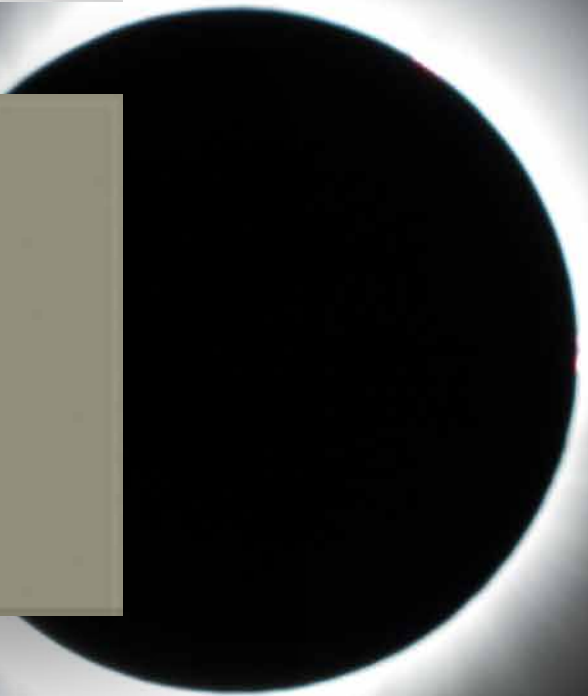
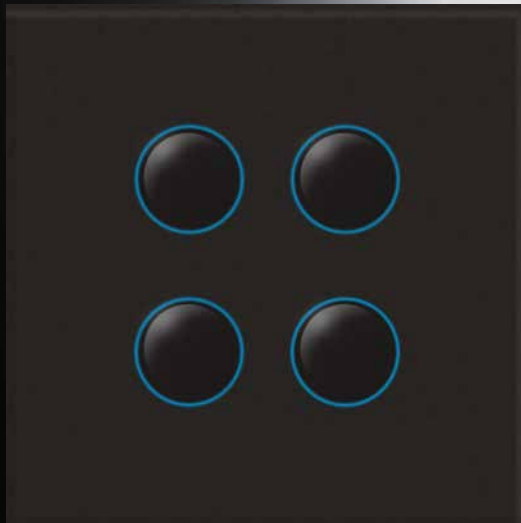
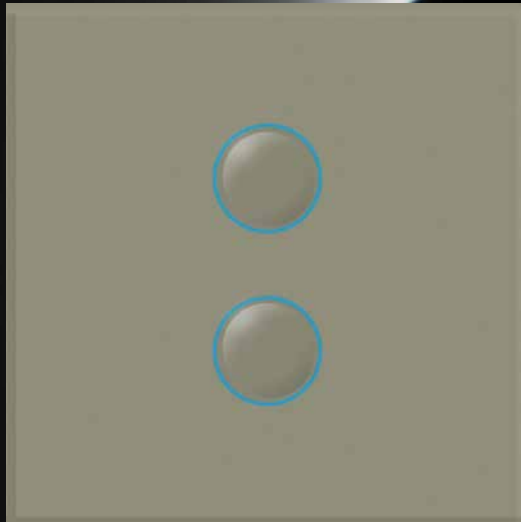
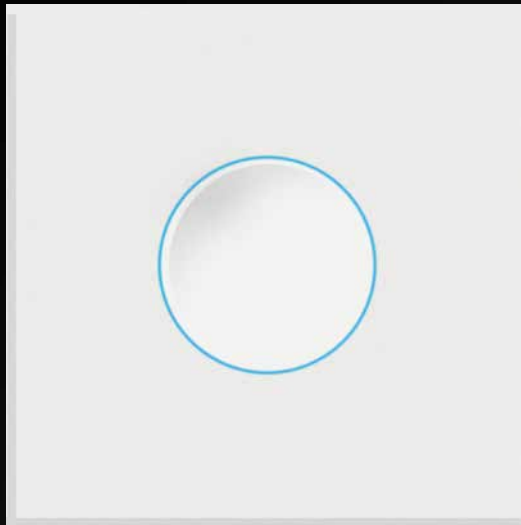
Touch. The button, elegantly sculpted into the glass surface, stands out with its embossed, glossy finish. Haptic feedback and a touch sensor increase the user experience.

Listen. Audible feedback confirms each button press, indicating the command has been successfully executed.



Material	Etched glass
Button	Sculpted
Color range	White, black, and sand RAL custom (upon request)





Standard colors

1000	1001	1002	1003	1004	1005	1006	1007	1011	1012	1013	1014	1015	1016	1017
1018	1019	1020	1021	1023	1024	1026	1027	1028	1032	1033	1034	2000	2001	2002
2003	2004	2005	2007	2008	2009	2010	2011	2012	3000	3001	3002	3003	3004	3005
3007	3009	3011	3012	3013	3014	3015	3016	3017	3018	3020	3022	3024	3026	3027
3031	4001	4002	4003	4004	4005	4006	4007	4008	4009	4010	5000	5001	5002	5003
5004	5005	5007	5008	5009	5010	5011	5012	5013	5014	5015	5017	5018	5019	5020
5021	5022	5023	5024	6000	6001	6002	6003	6004	6005	6006	6007	6008	6009	6010
6011	6012	6013	6014	6015	6016	6017	6018	6019	6020	6021	6022	6024	6025	6026
6027	6028	6029	6032	6033	6034	7000	7001	7002	7003	7004	7005	7006	7008	7009
7010	7011	7012	7013	7015	7016	7021	7022	7023	7024	7026	7030	7031	7032	7033
7034	7035	7036	7037	7038	7039	7040	7042	7043	7044	7045	7046	7047	8000	8001
8002	8003	8004	8007	8008	8011	8012	8014	8015	8016	8017	8019	8022	8023	8024
8025	8028	9001	9002	9003	9004	9005	9006	9007	9010	9011	9016	9017	9018	

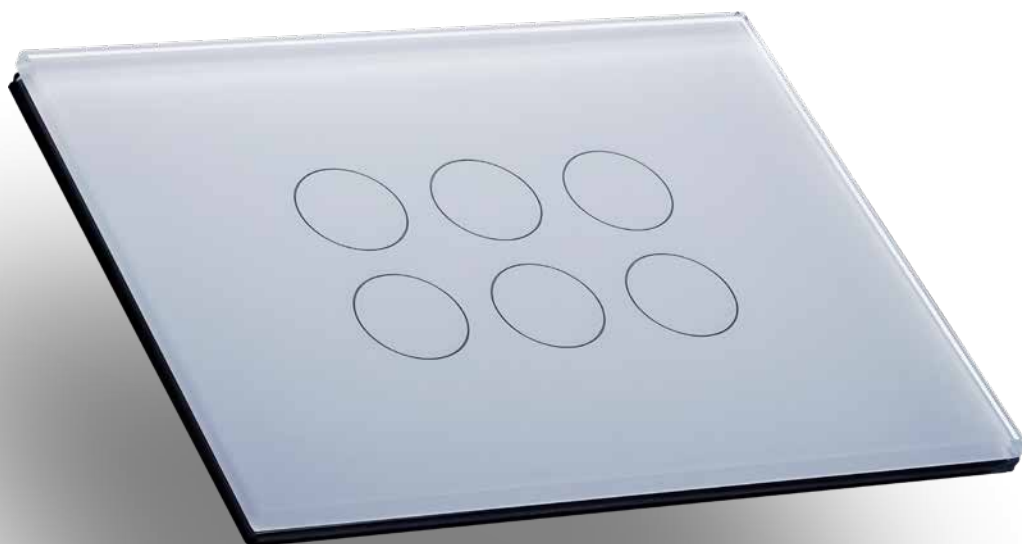


The power of the essential

TECH



TECH



Tech redefines the aesthetics of spaces, blending the allure of glass with cutting-edge design to give character and personality to contemporary environments.



Look. The button and aesthetics merge into a single surface, resulting in a collection with clean, elegant lines. The luminous circle, an unmistakable symbol of the brand, completes the minimalist design.

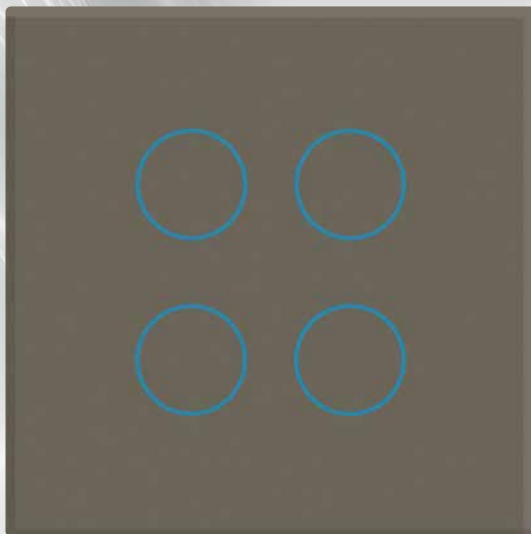
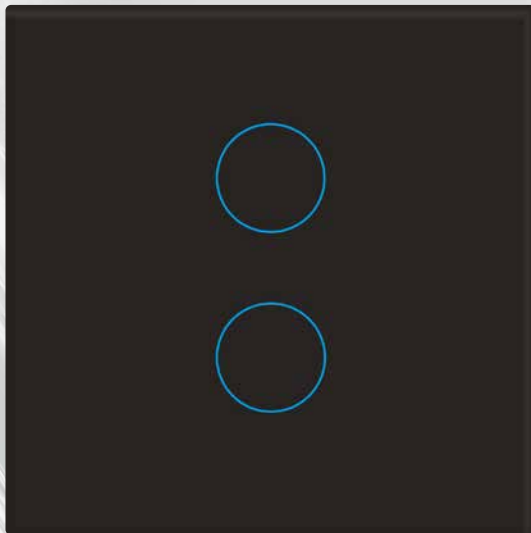
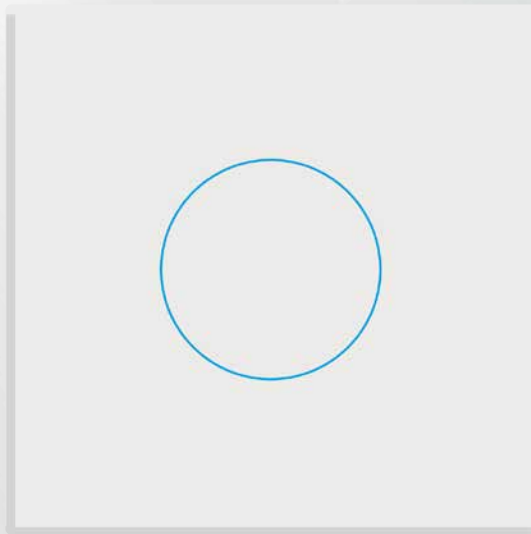
Touch. On the smooth, uniform, and flat surface, Tech reveals its true essence. Fingers glide effortlessly, with a gentle vibration signaling the button press.

Listen. More than just a sound, it's a response. The acoustic feedback provides immediate confirmation of the executed command.



Material	Glass
Button	Flat
Color range	Glossy white and black, frosted titanium





Standard colors



TECH

TAILOR MADE

With Tailor Made, you transform the Tech series. In addition to glossy or etched finishes, you have the opportunity to select the RAL color and texture that best blend with your interiors.

Bring your ideas to life by creating a product that enhances the design of your spaces.



New life to stone

STONE



STONE



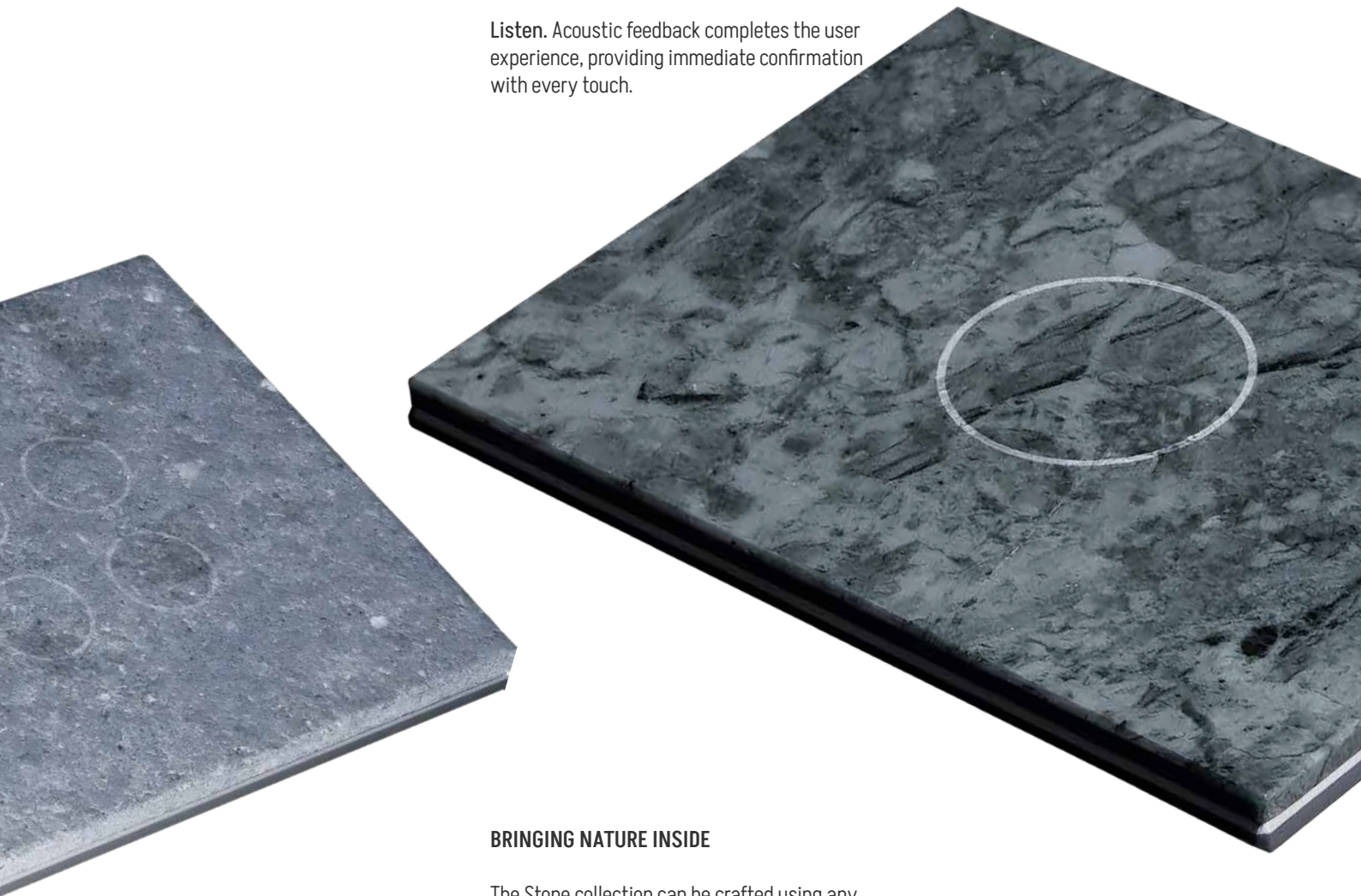
The strength of nature and attention to details are the defining features of Stone.

The stone is laser-cut to eliminate any imperfections and sharp edges, resulting in a collection of timeless elegance.

Look. Stones and marbles are showcased in their natural shapes and veining. The luminous circle fades away, allowing the raw, laser-cut stone to highlight the buttons and icons.

Touch. Stone offers a pure sensory experience—whether from the first contact with the raw stone or the smooth marble, each interaction with the device is engaging, complemented by integrated haptic feedback.

Listen. Acoustic feedback completes the user experience, providing immediate confirmation with every touch.

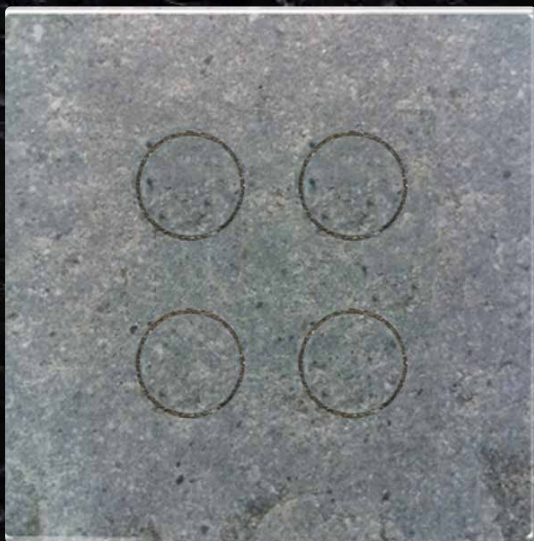


BRINGING NATURE INSIDE

The Stone collection can be crafted using any type of stone or marble that can be worked to a thickness of up to 4 mm.

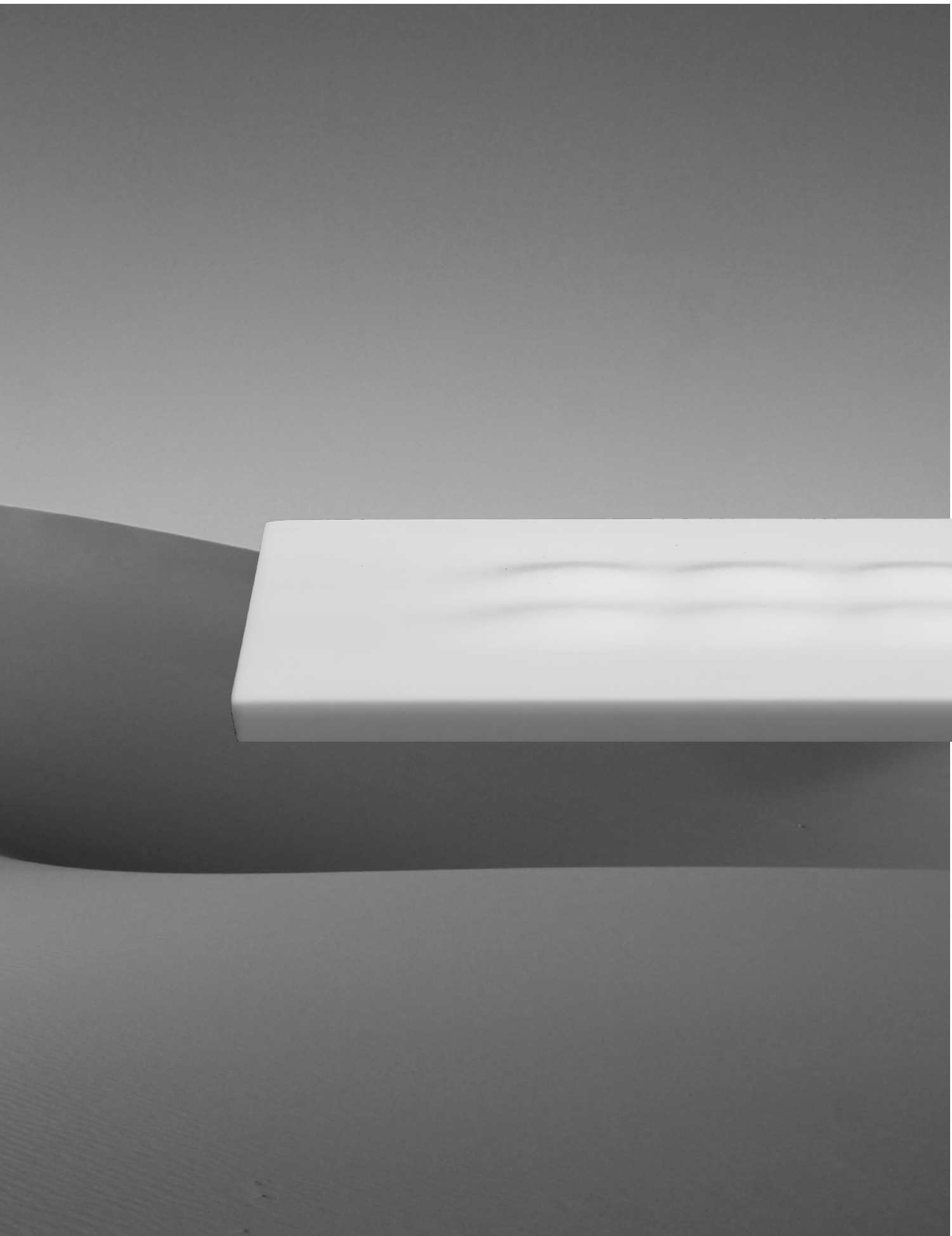
Material	Natural stone or marble
Finish	Upon request





Inspired by the shapes of nature


SENSE



SENSE



Form, light, and sound come together for a complete sensory experience. Elegant and flowing like the shapes of nature.



Look. The white surface completely covers the aesthetic, including the finishing frame. The customizable luminous circle, available in 7 colors, responds instantly to commands and remains visible even in the dark.

Touch. The flowing shapes of Sense guide fingers across the soft-touch surface. The button, easily identifiable even in the dark, responds to pressure with a gentle vibration. The high-quality material ensures a fingerprint-free touch.

Listen. The acoustic feedback is the immediate sound response to the button touch.

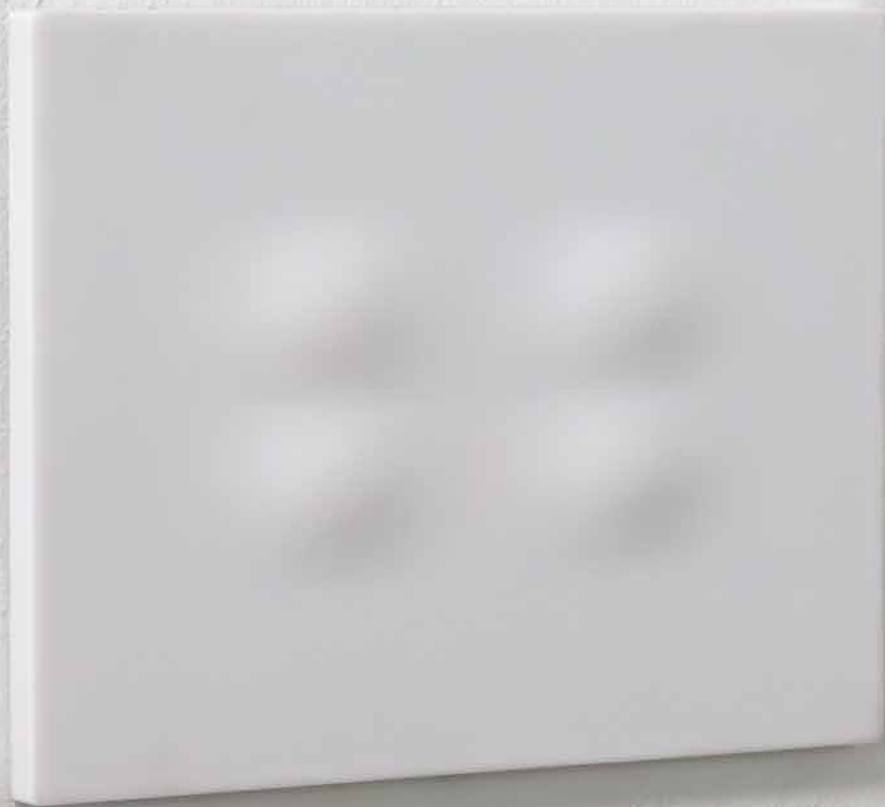


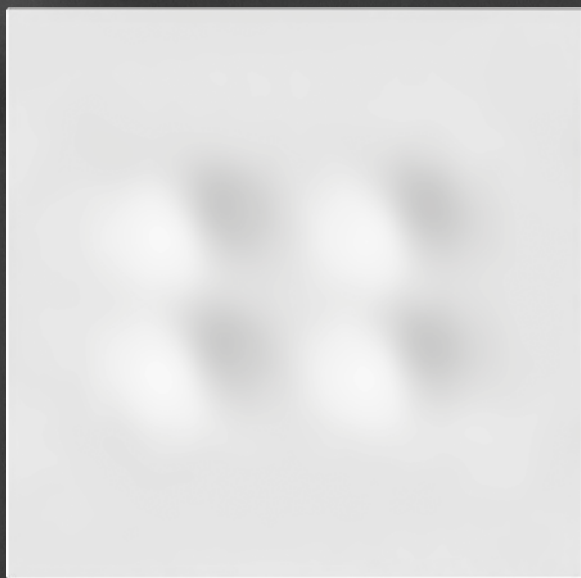
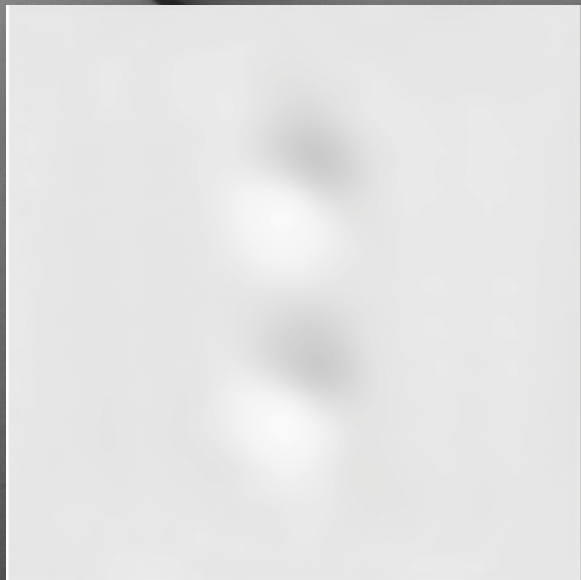
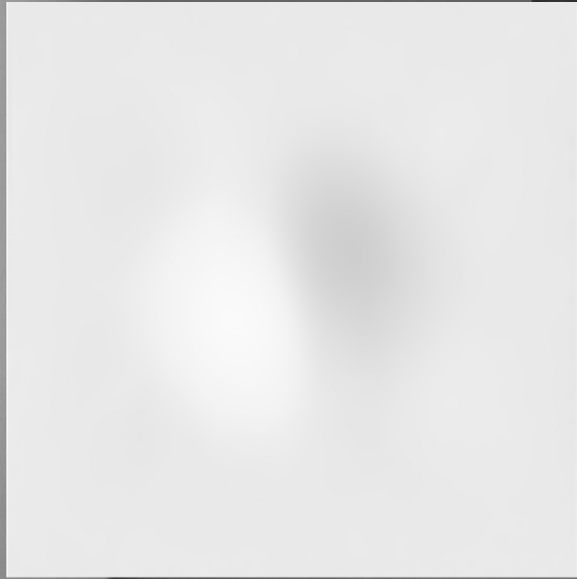
KRION® SOLID SURFACE

Composed of two-thirds natural minerals with the addition of high-strength resins, KRION® Solid Surface is a non-porous, antibacterial, and bacteriostatic material.

Its hardness, durability, and low maintenance make it the ideal choice for interiors, offering high performance and a refined aesthetic.

Material	KRION® Solid Surface
Finish	Matte Frameless
Color	White







BESPOKE

YOU IMAGINE IT, WE CREATE IT

Choose the format, size, and material of the Glass, Stone, and Tech devices. Customize the combinations of buttons and backlit icons.

Select colors and textures with glossy or matte finishes. Transform your spaces into tailored environments.





TECHNOLOGIES



A NEW LIVING EXPERIENCE





HEATING,
VENTILATION,
AND AIR CONDITIONING



THERMOREGULATION



SHUTTERS, BLINDS, AND
OVERHEAD DOORS



LIGHTS AND
SCENARIOS



ALARMS AND
SURVEILLANCE SYSTEMS



LOAD AND CONSUMPTION
CONTROL

THE WORLDWIDE STANDARD



KNX has been the global communication protocol for the automation of homes, offices, and state-of-the-art hospitality facilities for over 20 years. It stands out as the only open standard recognized internationally for managing building automation applications, ranging from lighting control to heating and security.

Thanks to its remarkable interoperability and integration, KNX allows Vitrum Design controls to operate with certified devices from other manufacturers. It is this flexibility that makes KNX the preferred choice among professionals.

DESIRE MORE

- Global standard for home automation
- Centralized system
- Complete configurability via the ETS program
- Interface with all KNX certified products
- Interoperability with third-party systems
- Compliance with national and international regulations

PURE HOME AUTOMATION

A wide catalog of devices makes up Vitrum Design's offering for the KNX protocol. Actuators and interfaces, gateways and web servers, IP touch panels and sensors, energy meters and weather stations, as well as analog and touch controls are available in the following formats: 2M, 3M, 4M, 6M, BS*, and Round.*

*ONLY 47MM DEPTH



ALARMS AND SURVEILLANCE



CONSUMPTION MONITORING



WEATHER STATION



LIGHTING AND SCENARIOS



LOAD CONTROL



SHUTTERS, BLINDS, AND OVERHEAD DOORS



AUDIO SYSTEMS



IRRIGATION



DEDICATED APP



THERMOREGULATION



VIDEO INTERCOM SYSTEM



SENSORS

YOUR SPACES, YOUR CONTROL

Discover the comfort of building automation: manage DALI lights through intelligent automation for personalized lighting.

Create advanced scenarios and integrate KNX alarm systems and video intercoms for total security. Control everything remotely and enjoy compatibility with Alexa and Google Home for simple and intuitive home automation.

ENERGY EFFICIENCY AND COMFORT

KNX devices enable precise monitoring of energy consumption via an app. Additionally, the thermoregulation of environments is optimized through the Vitrum Design thermostat and humidistat.

This system ensures superior energy efficiency, reducing waste and optimizing environmental comfort, making it ideal for sustainable use of modern buildings.

KNX ELECTRONICS

MULTIFORMAT

Vitrum Design KNX switches consist of a central unit and a Touch Keypad, available in various configurations: 1 button (for EU and BS versions), 2 to 6 buttons (EU only), and 2 and 4 buttons (BS 2M only). They allow the management of on/off switches, dimmers, blinds, and Venetian shutters, as well as the execution and learning of scenarios and automation.

The aesthetics are compatible with EU formats 3M, RD, BS 1G, EU 4M, and EU 6M. The KNX communication interface is included, ensuring perfect integration into the system.

COMMANDS

Equipped with an integrated temperature and humidity sensor, the devices allow for precise and continuous monitoring of environmental conditions. On the back, there is a configurable input that can be set as digital or analog, enabling the connection of an additional NTC probe for a second measurement.

In the event of a power outage, the backup battery allows the LEDs to automatically turn on, illuminating the room or highlighting a safe exit path. The controls are powered by a simple 2-wire BUS cable. Firmware updates can be easily performed via bus-ETS, ensuring that the system is always up to date with the latest features.

SENSORIAL FEEDBACK

Thanks to the presence of the haptic sensor and acoustic feedback (which can be disabled), the devices provide immediate and tangible feedback for every interaction. The vibration and sound confirm the execution of the switch.

To enhance the sensory experience, the buttons are illuminated with RGB LEDs. The devices support up to seven colors, offering a wide range of customizable lighting options.





SOMETHING NEW IN THE AIR

air

Air is the revolutionary protocol from Vitrum Design dedicated to Smart Homes and designed to radically transform home automation. Based on the Cloud system supported by UFO, our next-generation switch, it offers a complete solution for managing indoor environments.

Air products can be easily integrated into traditional 230V electrical systems, leveraging the distributed intelligence of the devices to ensure optimal performance.

Additionally, compatibility with other Wi-Fi and Bluetooth protocols ensures smooth and versatile integration with third-party connected devices and systems. Each operational logic of the system is fully configurable from the dashboard.

INTEGRATE YOUR SYSTEMS

Installable directly on traditional 230V systems, Air avoid the need for additional modules in the electrical panel, allowing for a simple installation without any structural work.

WHY AIR

- Compliance with European, national, and international regulations
- Installable on traditional electrical system
- Eco-friendly
- Remote management via the Vitrum Design app
- Compatibility with Alexa and Google Home
- Customizable automation and advanced scenarios
- Astronomical twilight and virtual weather station
- Integration with third-party Z-Wave devices (via UFO controller)



AIR QUALITY CONTROL



TEMPERATURE MANAGEMENT



LIGHTING AND SCENARIOS



VIRTUAL WEATHER STATION



DEDICATED APP



CONSUMPTION MONITORING



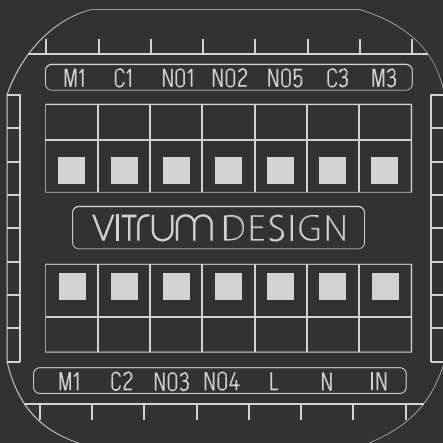
MOTORS AND TILT MECHANISMS



LOAD CONTROL



VOICE ASSISTANTS



ELECTRONICS

Vitrum Design air controls are available for various types of flush-mounted boxes: 2M, RD, BS, 3M, 4M, 6M, as well as for DIN rail and junction box installations.

The electronics consist of a Touch Keypad to be paired with the specific Central Unit. All flush-mounted electronics come equipped with a temperature sensor, humidity sensor, and backup battery. The backup battery activates the keypad, making the environments visible even in the absence of power.

ENERGY MANAGEMENT AND CONTROL

Equipped with 5 universal dry contact relays, the air devices can control lights, roller motors, gates, solenoid valves, and fan coils. Additionally, a dedicated input allows traditional switches and analog buttons to be transformed into smart devices, seamlessly integrating them into the home automation system. The built-in energy meters provide precise monitoring of the consumption for each connected load, optimizing energy management.



**Wherever you are.
Wherever you want.**

UFO

UFO II Generation is the advanced air system controller from Vitrum Design, known for its compact size and equipped with a backup battery that ensures continuous operation during power outages.

It features integrated environmental sensors for temperature, humidity, and noise detection, along with a voice assistant and self-learning artificial intelligence. Acting as the "Home Brain," it monitors user habits and suggests behaviors to improve energy efficiency. Compatible with native and integrated voice control systems like Amazon Alexa™ and Google Home™, UFO enables simple, intuitive management of environments, even remotely.

Connection is effortless and secure through supported protocols such as Wi-Fi, Bluetooth Low Energy, and Z-Wave, ensuring seamless integration with other smart devices.



diameter 144 mm x 45 mm



APP

Managing your environments is effortless with the app designed by Vitrum Design for smartphones and tablets. The new interface allows you to reliably customize and control connected devices, both locally and remotely, ensuring effective monitoring and reduction of energy consumption. With the integrated chatbot, configuration becomes even easier.

Vitrum Design's app transforms the management of your Smart Home into an intuitive experience, enabling you to have your home always at your fingertips.

- Temperature
- Lights
- Shutters
- Scenarios
- Voice Control
- Consumption



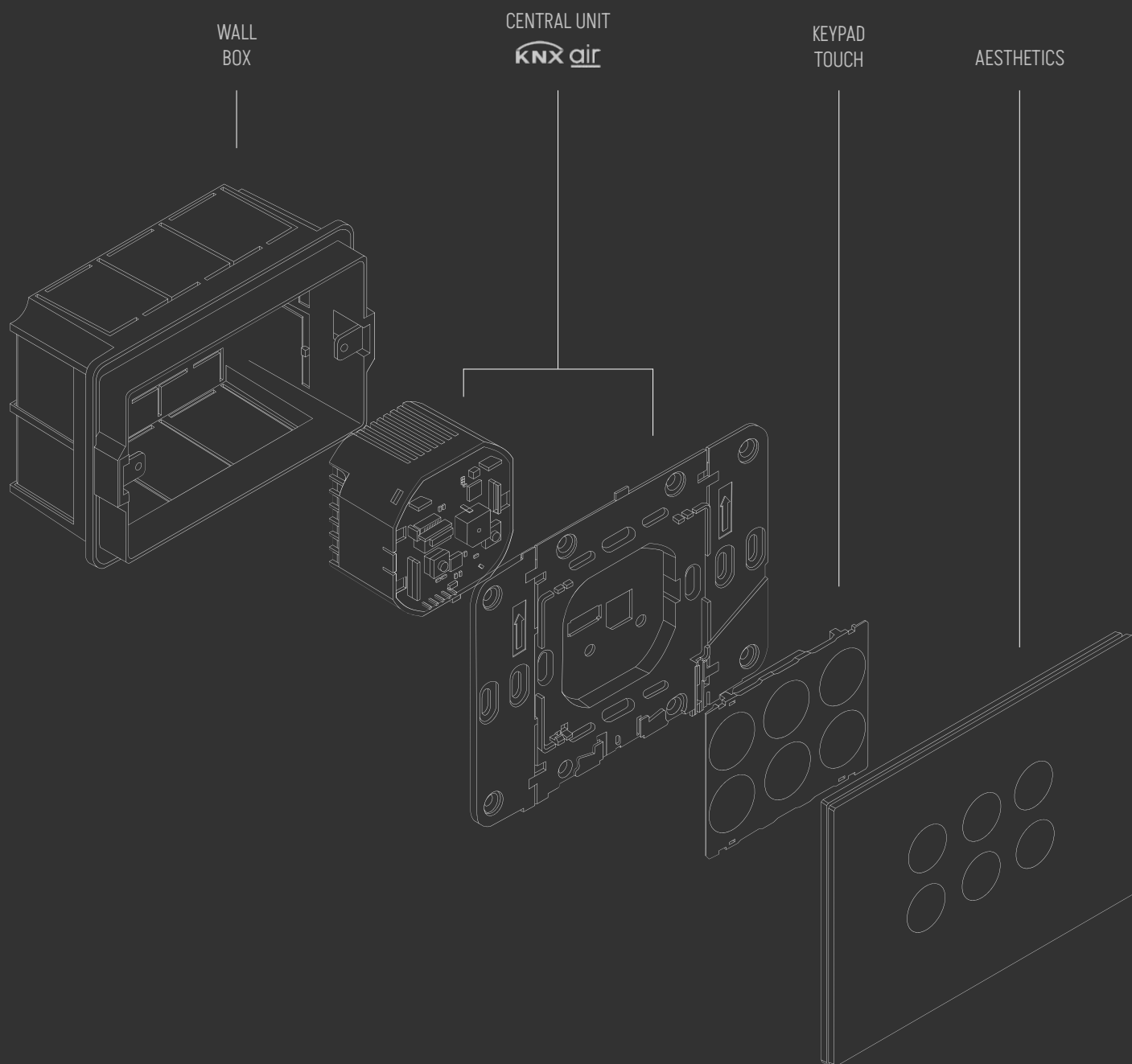
VITRUM

DESIGN

TECHNICAL SPECIFICATIONS

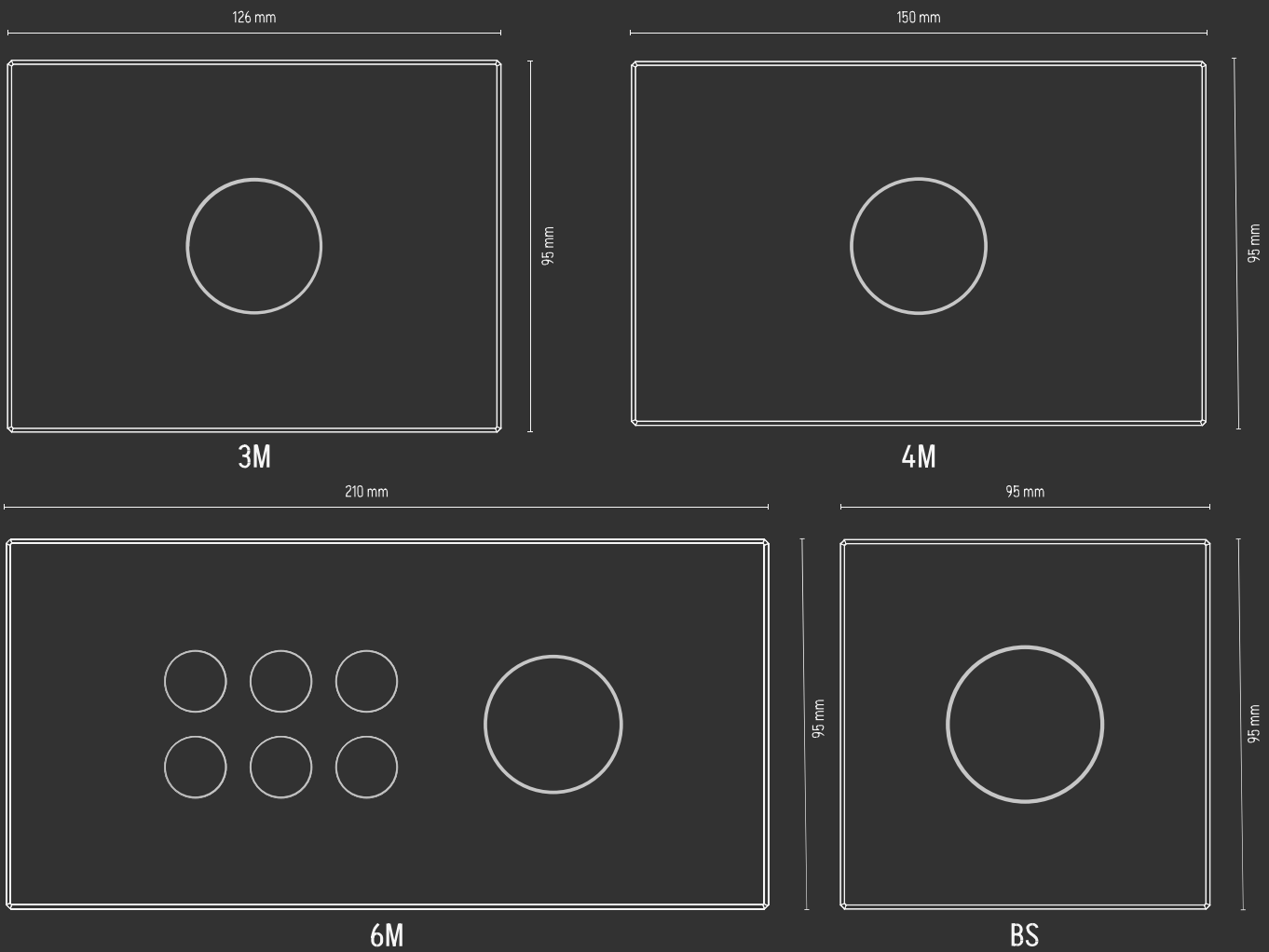
ANATOMY

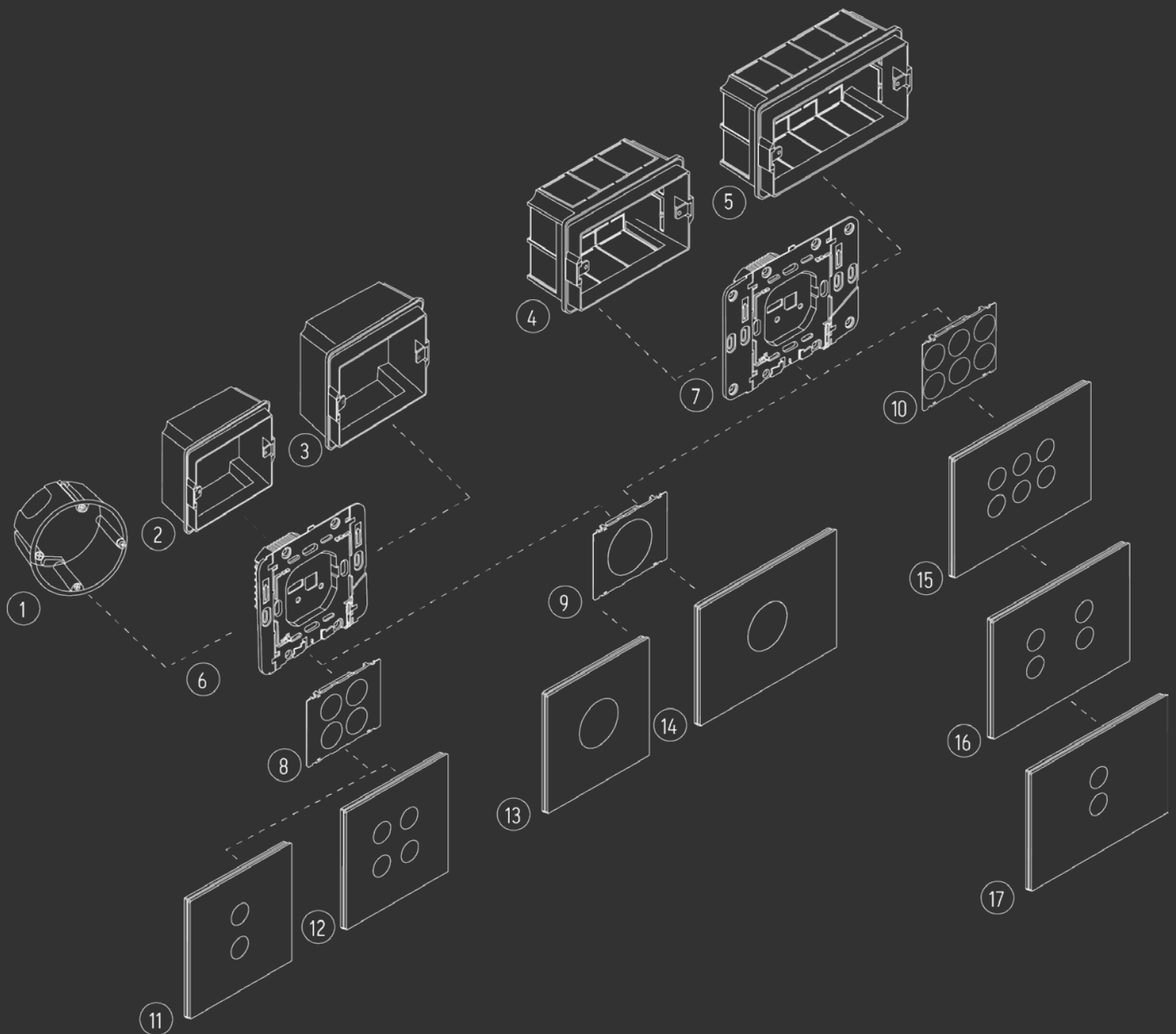
Both air and KNX switch consist of an aesthetic, a Keypad Touch, and a Central Unit, and are installed on traditional flush-mount boxes.



DIMENSIONS

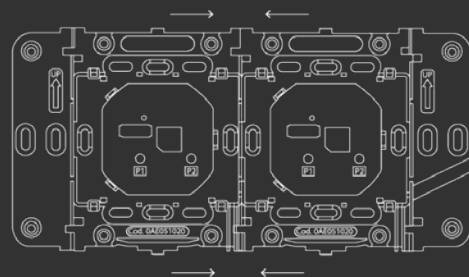
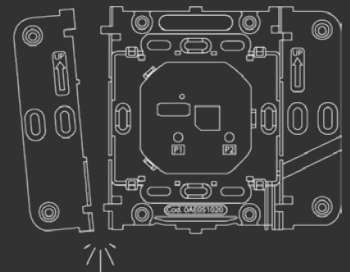
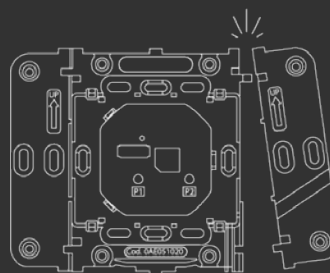
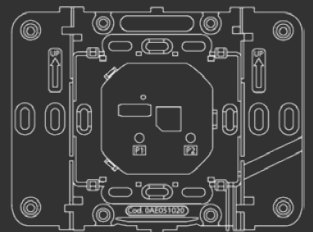
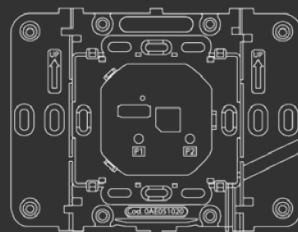
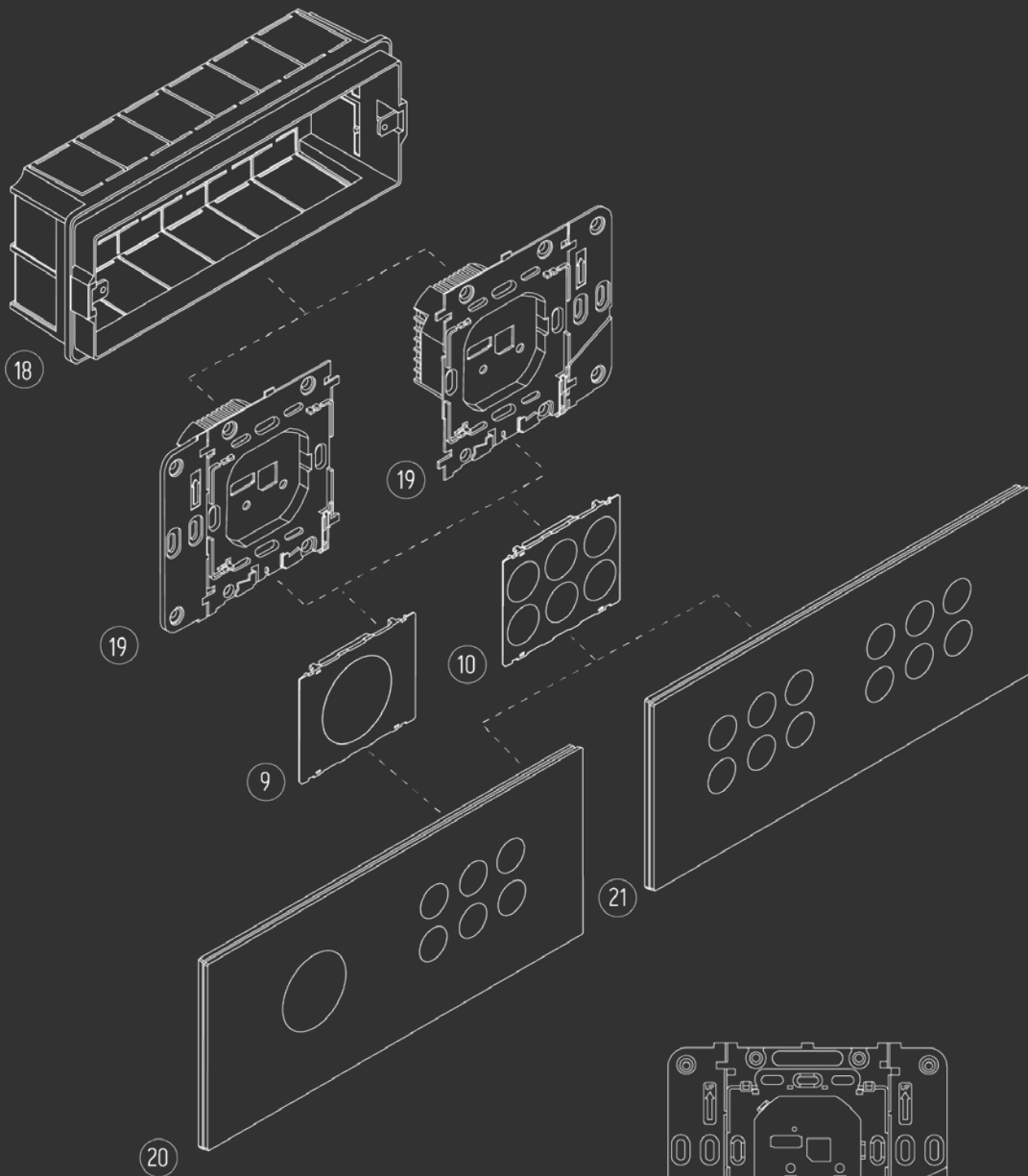
Commands with air and KNX technology are available in the following formats:





- | | |
|-----------------------------------------------------------------------------|--------------------------------------------------------------|
| 1. Wall box round or 2M (EU 502)* | 12. Aesthetic BS IV Tech cod. 16BV4000 |
| 2. Square wall box* | 13. Aesthetic EU BS I Tech cod. 16BV1000 |
| 3. Wall box BS cod. 2000604* | 14. Aesthetic 3M I Tech cod. 16EV1000 |
| 4. Wall box 3M (EU 503) cod. 2000503 | 15. Aesthetic EU 3M VI Tech cod. 16EV6000 |
| 5. Wall box 4M (EU 504) cod. 2000507 | 16. Aesthetic EU 3M IV Tech cod. 16EV4000 |
| 6. Central Unit BS: air cod. 0AB051020 / KNX cod. 0KB001020 | 17. Aesthetic EU 3M II Tech cod. 16EV2000 |
| 7. Central Unit EU: air cod. 0AE051020 / KNX cod. 0KE001020 | 18. Wall box 6M (EU 506) cod. 2000506 |
| 8. Keypad Touch BS da IV o II Keys: air cod. 0AB04T020 / KNX cod. 0KB04T020 | 19. Central Unit EU: air cod. 0AE051020 / KNX cod. 0KE001020 |
| 9. Keypad Touch EU/BS da I Key: air cod. 0AEB1T020 / KNX cod. 0KEB1T020 | 20. Aesthetic EU 7M I+VI Tech cod. 16SV7000 |
| 10. Keypad Touch EU with VI keys: air cod. 0AE06T020 / KNX cod. 0KE06T020 | 21. Aesthetic EU 7M VI+VI Tech Cod. 16SV1200 |
| 11. Aesthetic BS II Tech cod. 16BV2000 | |

*MINIMUM DEEPH 47MM.



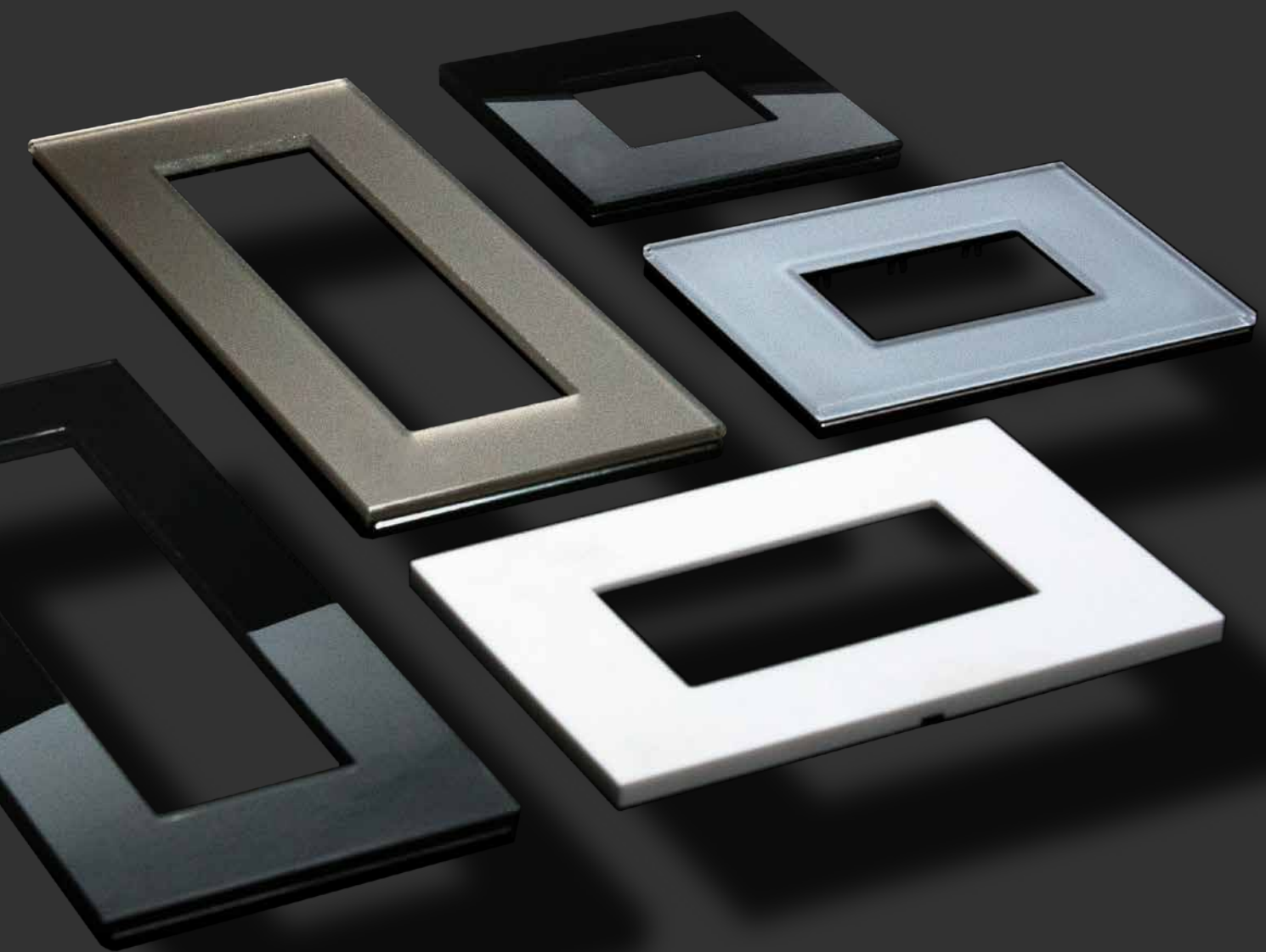
KEYPAD MODULES AND COMBINATIONS

The new Vitrum Design products allow for multiple combinations of modules and buttons starting with just 2 Central Units. The EU Central Unit: air code 0AE051020 / KNX code 0KE001020 is compatible with formats 3M, 4M, and 6M, offering two types of Keypads: one with 1 button and one with 6 buttons, which can be activated as preferred to achieve configurations of 2, 4, or 6 buttons with just one product.

For a 6M electronic setup, simply assemble 2 Central Units of 3M by removing the side flaps and interlocking them, then pair them with the preferred 3M Keypad Touches.



ACCESSORIES



FRAMES AND WALL PLATES

Created to enhance the aesthetics of Vitrum Design collections, they are also compatible with devices from major manufacturers.

A wide range of high-quality materials, finishes, and formats are expertly machined, even in the internal cutting, for a clean and high-quality effect.

Installation: Pressure-fit onto Vitrum Design wall plates for quick and easy installation.

SIZE

Glass - 2M, 3M, 4M e 7M
Tech - 2M, 3M, 4M e 7M
Stone - 3M
Sense - 2M e 3M

SOCKETS

Colors: White and black
Finish: Matte

The Vitrum Design civil series represents the perfect combination of efficiency and versatility, offering a wide range of electrical sockets compatible with European and international standards.

EUROPEAN SOCKETS

Switches, emergency lamps, USB sockets, and traditional sockets that are widely used in the European landscape and compliant with EU directives.

INTERNATIONAL SOCKETS

For international customers, Vitrum Design offers single and double gang sockets that comply with international standards, ensuring quality and reliability for every electrical installation in the global market.

HIDDEN SOCKETS

HIDDEN SERIES

The retractable series conceals electrical sockets behind an elegant sliding panel, combining flexibility, efficiency, and sophistication.

COVERS

The aesthetic reflects the distinctive aesthetics of Vitrum Design's signature, seamlessly integrating with devices from the Glass, Tech, and Stone collections. The cover protrudes from the wall by only 15 mm when the plug is inserted.

CHASSIS

Adaptable to both masonry and drywall surfaces, the device comes complete with the socket and installs as easily as a traditional outlet.

Color Options: White, Anthracite.

SIZE

3M: Only for flush-mounted boxes
4M: Flush-mounted boxes or drywall installations

[DISCOVER ALL THE AVAILABLE SOCKETS ON THE DEDICATED PAGE OF THE WEBSITE.](#)

